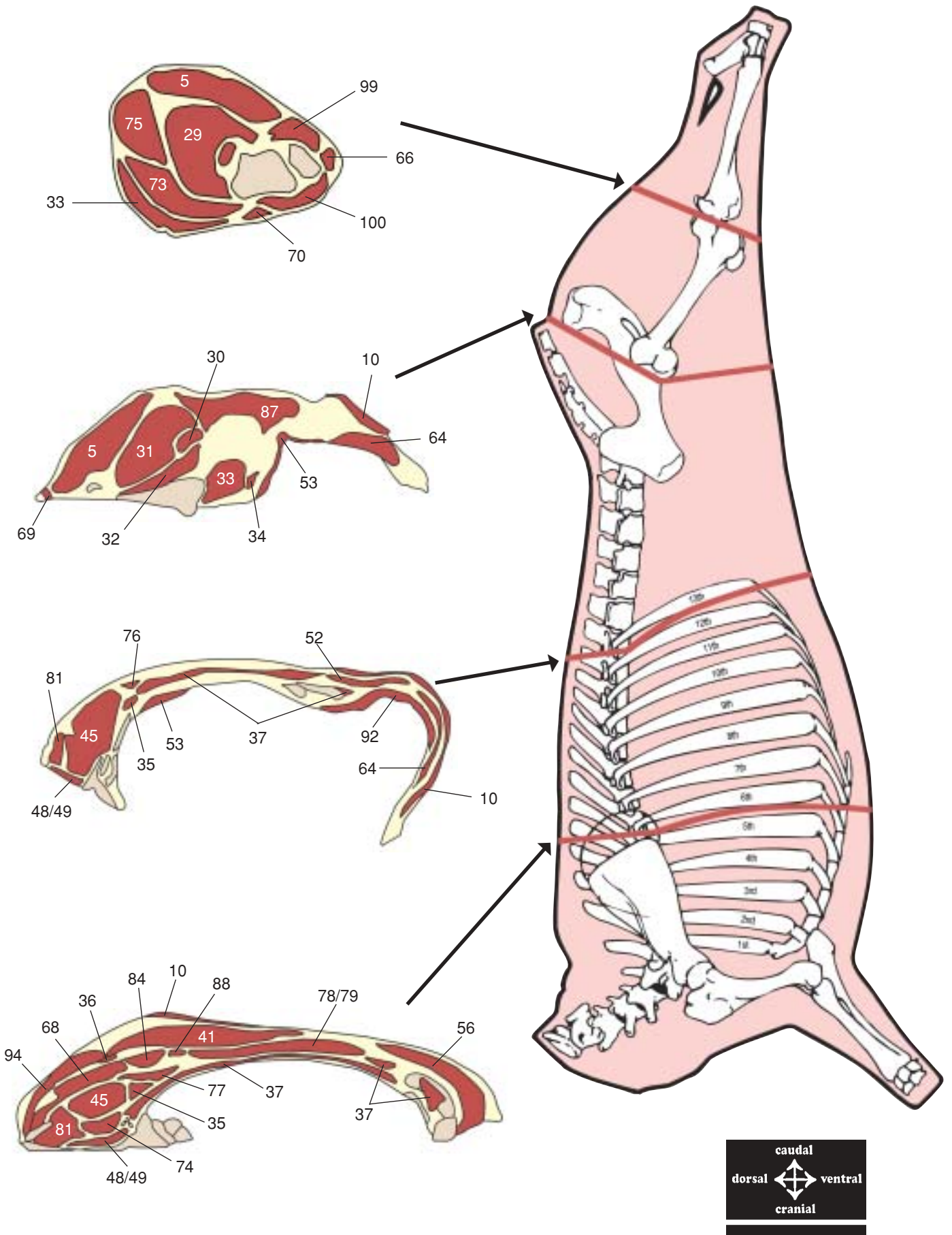
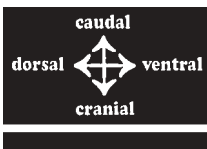
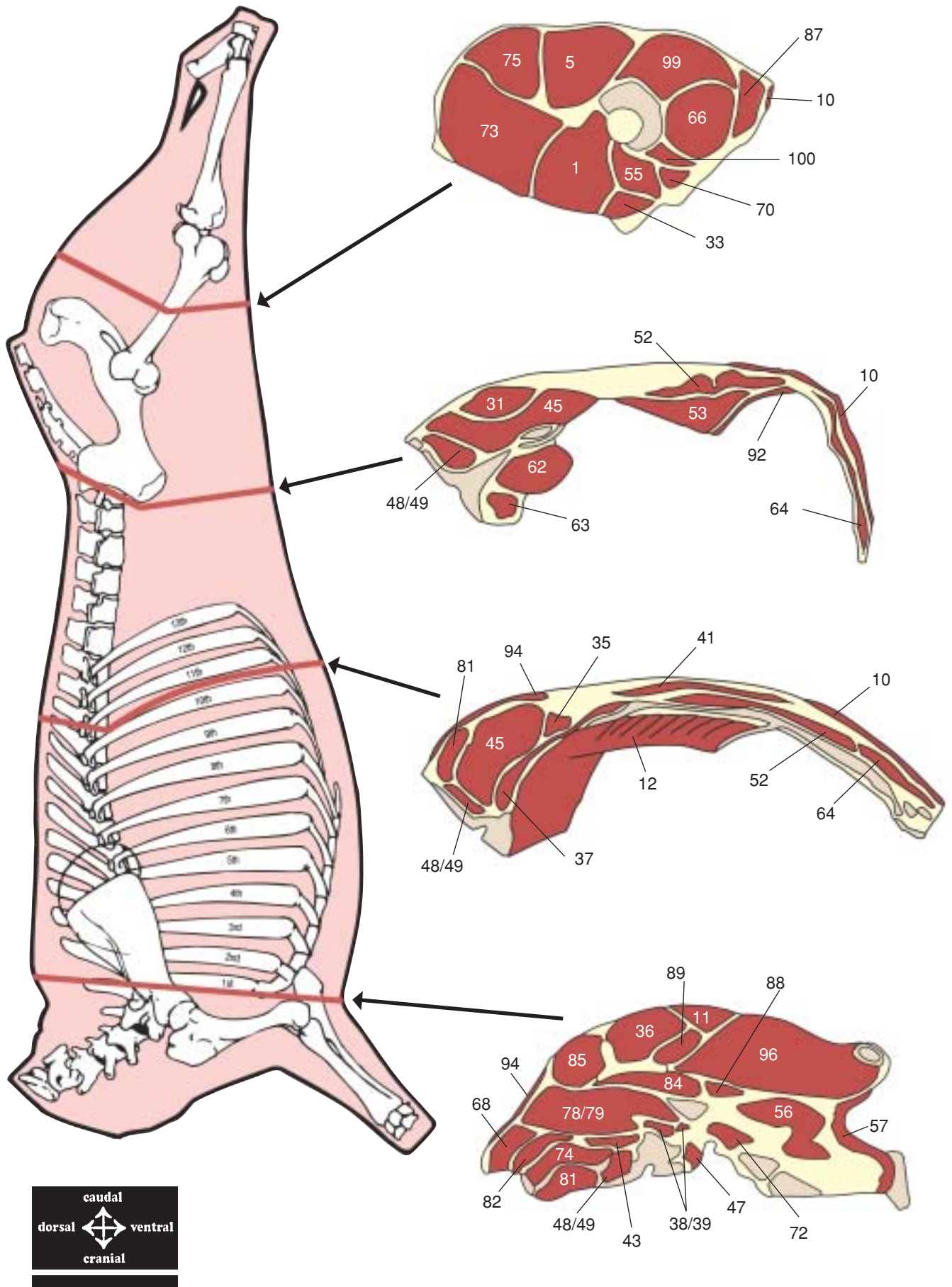


# BEEF CROSS SECTIONAL VIEW

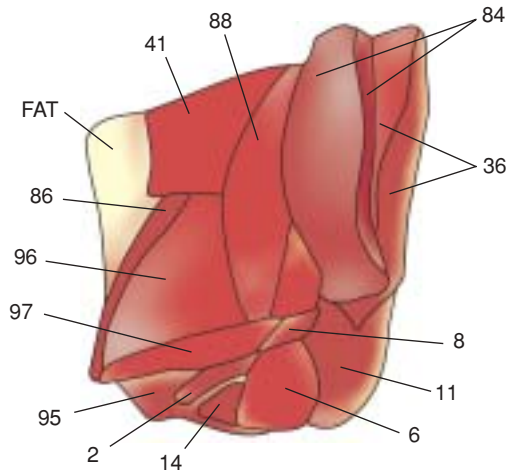
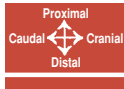
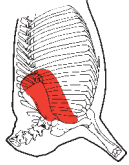


# BEEF CROSS SECTIONAL VIEW



# FOREQUARTER PRIMALS

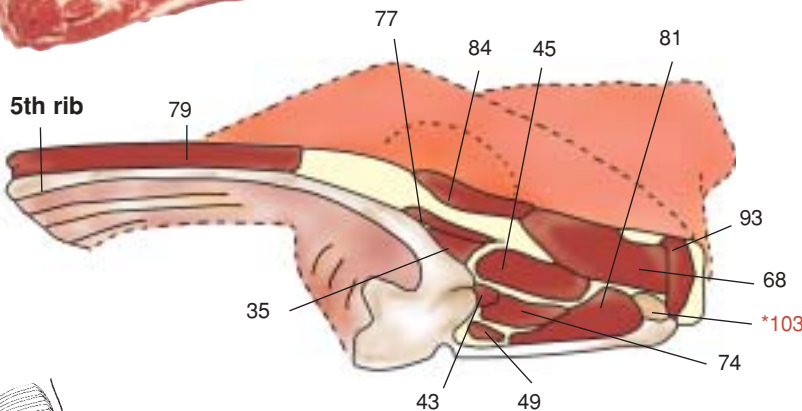
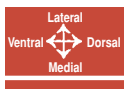
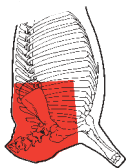
## BLADE 2300



### List of Muscles:

- 2 M. anconaeus
- 6 M. brachialis
- 8 M. coracobrachialis
- 11 M. deltoideus
- 14 M. extensor carpi radialis
- 36 M. infraspinatus
- 41 M. latissimus dorsi
- 84 M. subscapularis
- 86 M. tensor fasciae antibrachii
- 88 M. teres major
- 89 M. teres minor
- 95 M. triceps brachii caput laterale
- 96 M. triceps brachii caput longum
- 97 M. triceps brachii caput mediale

## CHUCK 2260 (5 RIBS)



### List of Muscles:

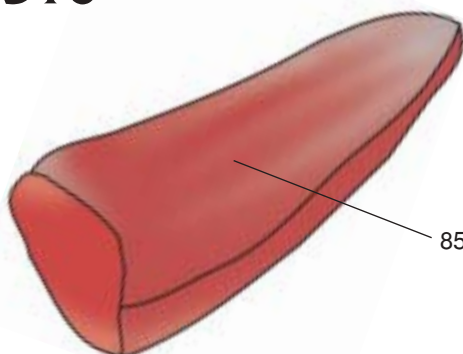
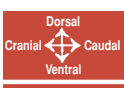
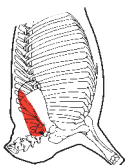
- 35 M. iliocostalis (syn. M. longissimus costarum)
- 43 M. longissimus cervicis
- 45 M. longissimus dorsi (syn. M. longissimus thoracis et lumborum)
- 49 M. multifidi dorsi
- 68 M. rhomboideus
- 74 M. semispinalis capitis (syn. M. complexus)
- 77 M. serratus dorsalis cranialis
- 79 M. serratus ventralis thoracis
- 81 M. spinalis dorsi
- 84 M. subscapularis
- 93 M. trapezius cervicalis
- 6# M. brachialis
- 7# M. brachiocephalicus
- 38# M. intertransversarii cervicis
- 39# M. intertransversarius longus
- 44# M. longissimus capitis et atlantis
- 46# M. longus capitis
- 47# M. longus colli
- 48# M. multifidi cervicis
- 50# M. obliquus capitis caudalis
- 54# M. omotransversarius
- 65# M. rectus capitis dorsalis major
- 71# M. scalenus dorsalis
- 72# M. scalenus ventralis
- 82# M. splenius
- 83# M. sternocleidomastoideus

### Other Structures

\*103 ligamentum nuchae

# Muscles of the Chuck not shown in illustrations.

## CHUCK TENDER 2310

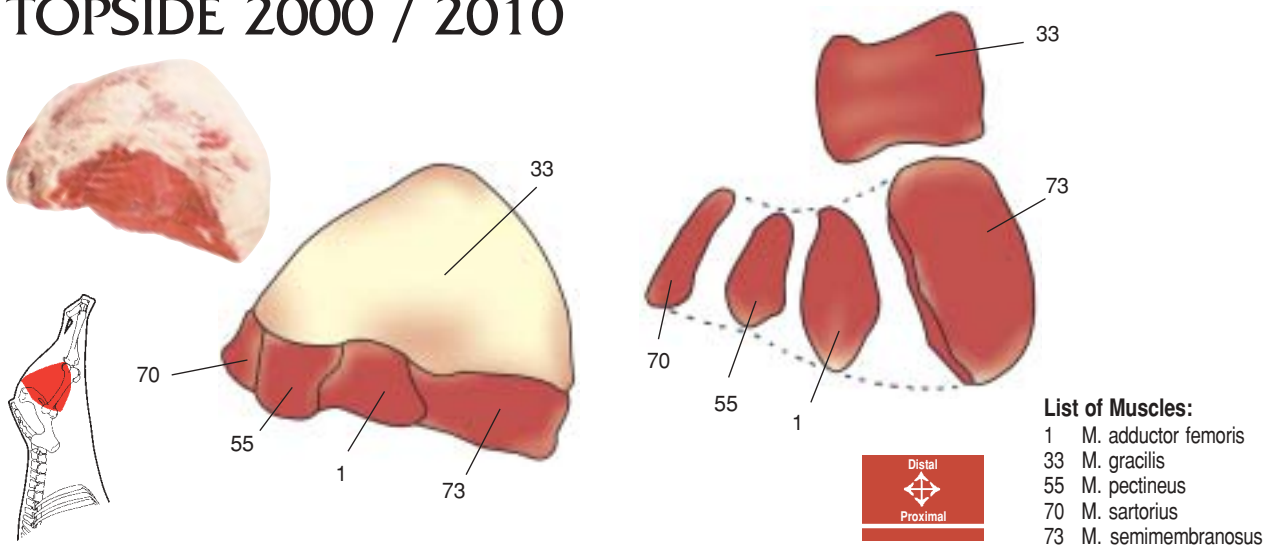


### List of Muscles:

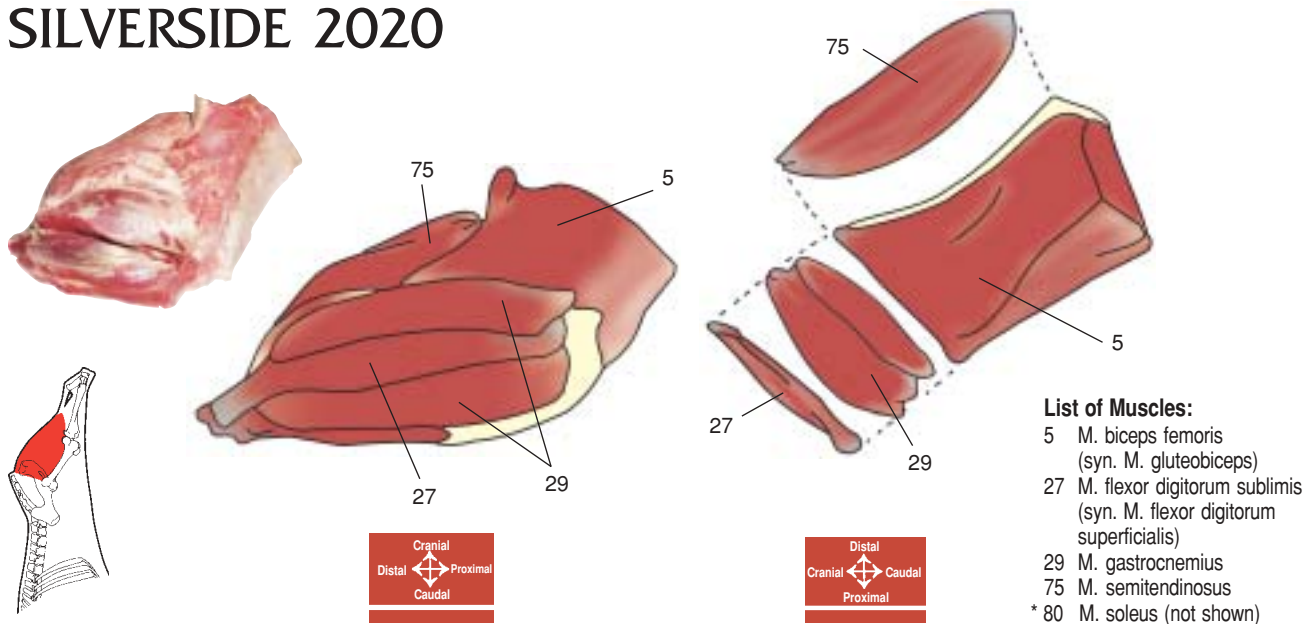
- 85 M. supraspinatus

# HINDQUARTER PRIMALS

## TOPSIDE 2000 / 2010



## SILVERSIDE 2020



## KNUCKLE 2070

